



the
wedding
singer

The Musical Comedy

April 9TH—11TH, 2010
Sorenson Theatre
BabSON College

Dedication

Truly quiet heroes, these hidden gems sweep in to save the day for the Babson Players. “Could you please move the piano?” “We need 10 chairs!” “Could we get a dumpster?” “Sorry, we know its midnight, but we still need the theatre...” The pleas from the Players are endless... yet from setup, to tear-down, to crisis control, the Facilities team at Babson College goes above and beyond simply completing work requests. The support Facilities provides to the Players is beyond evident. Producing a theatrical performance isn’t easy, especially considering the random surprises that appear each day during the rehearsal and technical process. It is because of departments in the Babson community like Facilities that we can produce a show at all.

For this and more, we thank you and proudly dedicate this epic production of *The Wedding Singer* to the Babson College Facilities Department.

Yours in Player Love,

The Bab**SON** Pl**AYERS** Exec**UTIVE** BO**ARD**

Van**ESSA** The**OHARIS**, President

Me**REDITH** Wha**TLEY**, Vice President

Jac**OB** Br**ADY**, Treasurer

Ke**RRY** Li**SZKA**, Secretary

Mo**RGAN** Sm**ITH**, Events Coordinator

The Babson Players
Production of

The Wedding SiNGER

Original Music By
Matthew Sklar

Original Book by
Chad Bequelin & Tim Herlihy

Originally Produced by
Music Theatre International, Inc.

Original Lyrics by
Chad Bequelin

Based on the New Line Cinema film Written by
Tim Herlihy

Directed by
James Fagan

Choreographed by
Kimberly Allen

Music Direction by
Jarret Izzo

Stage Managed by
Kerry Liszka

Technical Direction by
Chris Casey & Julie Williams

The Wedding Singer is presented through special arrangement with Music Theatre International, Inc. (MTI). All authorized performance materials are also supplied by Music Theatre International, Inc. (MTI), 421 West 54th Street, New York, NY 10019
Tel.:(212) 541-4684 Fax: (212)397-4684 www.mtishows.com

DIRECTOR'S NOTE

Why *The Wedding Singer*? Do you like having your face rocked off? Do you like mocking an image of your parents, your siblings, yourselves and your culture from three solid decades ago? Do you have an affinity for Adam Sandler? Are you here to see Drew Barrymore? (Sorry... she couldn't make it.) Stick around anyway: if you've never seen this hit film alive on stage, you're going to be surprised by what you find.

At its most obvious and delightfully overblown surface, *The Wedding Singer* is a larger than life movie turned musical; 80's pop culture, synthesized music and spandex to the nines. And of course, the truth about a wedding is timeless: you don't have to love "Bridezilla" to love this show's look at the culture and mania of that "special day." On a personal level, as I'm just now entering a portion of my life where wedding invites are flowing in at a rate that rivals the great Barmitzvah or sweet sixteen stage - this show is screaming the truth that's so greatly lost in the chaos. Deep down in this show's dumpster, it's all about the love.

It's a love story in its purest form. Boy meets girl, girl loves boy, boy gets girl to dump boy and wed him. If you've ever been in love, had your heart broken, or laid it all out on the line, this show is for you (which is cliché but hey, it's *The Wedding Singer*, what did you expect?).

So let loose! "It's your wedding day, and love is what we do."

“THE STORY”

The Babson Players are proud to present their spring musical, *The Wedding Singer*. The musical, which is based on the 1998 movie of the same name, features music by Matthew Sklar, lyrics by Chad Beguelin, and a book by Beguelin and Tim Herlihy. *The Wedding Singer* takes place in 1980's New Jersey and tells the story of jilted wedding singer Robbie Hart. Robbie then meets Julia and agrees to help her plan her wedding, but problems arise as Robbie realizes his true feelings for Julia.



CAST of CHARACTERS

| | |
|-----------------------------|---------------------|
| Robbie Hart | Benjamin Small |
| Julia Sullivan | Annie Maraschiello |
| Holly | Jacqueline Chambers |
| Glen Guglia | Mike Bergeron |
| Linda | Vanessa Theoharis |
| Sammy | Tom Pandolfo |
| George | Winfred Fields |
| Rosie | Amanda Greenslet |
| Angie | Stephanie Ayotte |
| Ricky/Dance Captain/Ronald | Jacob Brady |
| Regan Impersonator | |
| Store Clerk/Tiffany | Christy Laubach |
| Dance Captain/Debbie | Renata Ribeiro |
| Billy Idol/Donnie | Shawn Salerman |
| Best Man: 1st Wedding/Cindy | Morgan Smith |
| Lauper Impersonator | |
| Donatella | Tanya Soman |
| Shane | Shoney Yakubjanov |
| Crystal | Renee Barton |
| | LaShonda Cooks |
| Tina Turner Impersonator | Sarina Kowaguchi |
| | Tiffany Lien |
| | Tiffany Otto |
| Harold | Siddharth Saxena |
| | Kip Shelton |
| Donatella | Patricia Silhy |
| | Tanya Soman |
| | Andrea Stadler |
| Mookie/Mr. T Impersonator | Michael Sung |
| | Sarah Winnett |
| | Diana Yan |
| | Amy Zalatan |

Production STAFF

| | | |
|------------------------------|-----------------|---------------------|
| Director | | James Fagan |
| Musical Direction | | Jarret Izzo |
| Technical Direction | | Chris Casey |
| Assistant Technical Director | | Julie Williams |
| Choreographer | | Kimberly Allen |
| Stage Manager | | Kerry Liszka |
| Faculty Advisor | | Dean Richard Mandel |
| Executive Board | | |
| President | | Vanessa Theoharis |
| Vice President | | Meredith Whatley |
| Treasurer | | Jacob Brady |
| Secretary | | Kerry Liszka |
| Events Coordinator | | Morgan Smith |
| Assistant Stage Managers | | Jillian Montane |
| | | Julie Williams |
| Lights and Light Design | | Greg Brewster |
| Assistant Lights | | So Yoon Jun |
| | | Alex Trazkovich |
| Sound | | Adam Camiel |
| Additional Tech Crew | Haya Alzaid | Daniel Buslik |
| | Lauren DeSoiza | Adam Klazmer |
| | Yana Matlis | Sam Murad |
| | Ben Ramic | Alina Rodriguez |
| | Brett Sobol | Meredith Whatley |
| | | Sara Zimmerman |
| Make-Up | | Mary Halpin |
| | | Maria Mutter |
| Costumes | | Carolyn Charpie |
| | | Jess McDonough |
| | | Puja Mehta |
| House Manager | | Ranee Cheung |
| Ushers | Ifreen Abbassi | Ankush Chadha |
| | Daniel Flaherty | Harold Jaffe |
| | Lauren Kritzer | Gordon Livingstone |
| | Puja Mehta | Tyler Murphy |
| | Adrya Sanchez | Ross Simons |
| | | Jillian Smith |
| Props | | Stephanie White |

SPECIAL THANKS TO

Adam Stahl and Tufts Children's Theatre

Alumni Relations

Babson Entertainment Initiative

Babson General Counsel

Boston College Theater Department

Brian Shue and Gretchen Westgren, Trim Dining Hall and Sodexo

Burl Hash

Docutech

Facilities

F.W. Olin Players

Heath Extended Day Program

Jessica Chen and BAPSA

Kay Sorensen and Greg Brewster, Sorenson Center for the Arts

Office of Campus Life

Paul Daigneault, SpeakEasy Stage Co.

Roger's Pub

Sandy Sweetman

Stephanie White

The Palace Theatre, Manchester, NH

The Undergraduate Dean's Office

Winthrop Playmakers

The **VIDEOTAPING OR OTHER VIDEO OR
AUDIO RECORDING OF THIS
PRODUCTION IS STRICTLY PROHIBITED.**

The Bab**SON** Pl ayer **S ARE**
Sponsored **BY**



This **SHOW FEATURES LIGHTING**
EFFECTS WHICH MAY BE HARMFUL TO
INDIVIDUALS WITH CERTAIN MEDICAL
CONDITIONS

BiOGRAPIHIES

St**EPHANIE** **AYOTTE** (Angie)

Stephanie is a Senior at Babson College and SUPER excited to be in *The Wedding Singer*. She loves all kinds of musicals and this musical is no exception! As a senior, Stephanie is sad to be leaving all of the friends she has made while with the Players. They will always be in her heart! She would like to thank her family and friends for their love and support! LOVE YOUUUU!!!!



Re**NEE** Bar**TON** (ENSEMBLE)

Renee is a junior at Babson College and is a proud 80s baby (1988 to be exact). She is super excited to be a part of this stellar cast and to work with this totally awesome crew. She would like to thank all her family in friends back home in Fort Worth, Texas for their continued love and support, her fellow A6ers for living with her craziness, and the Matrix crew for helping her put life in perspective. With all this 80s-ness going

on Renee couldn't help but wonder what 80s song she would be. Thanks to Blogthing.com she has to wonder no more! Renee is "Like a Virgin". Lol =)

MIKE **BERGERO**n (Glen Gu**GLIA**)

Mike is a freshman at Babson College from Cape Cod, Massachusetts. He is really excited for his first acting/singing experience since elementary school! His hobbies include fishing, drumming, and online gaming. Playing Glen has been interesting since his values are the exact opposite of what he stands for. He would like to thank all of acting, dancing, and musical professionals for teaching him everything from scratch and the Babson Players for making his first year at Babson approximately 5000% more AWESOME!



JACOB BRADY (RICKY/ DANCE CAPTAIN)

Jacob Brady was (scarily enough) only a little over two months away from not being born in the eighties. Luckily, he didn't miss out on the most totally, to the max awesome decade ever. Even at the age of one month he was blasting his stereo to the tune of Van Halen and rocking out on Atari before the boring 90's arrived. He would now like to thank many people for sharing and helping him participate in the coolest 80's show on earth. Thanks to Vanessa, my family, friends, directors, and of course the Players Enjoy!



JACQUELINE CHAMBERS (HOLLY SULLIVAN)



Jacqueline is thrilled to be Holly in *The Wedding Singer*. Ever since seeing the show two years ago she was dying for the opportunity to play Holly in this fantastic show, and can't believe she got the chance to do just that. Putting on *The Wedding Singer* with the Players has been one of the most rewarding and fun experiences at Babson, and is a great way to end an amazing four years. After graduation, Jacqueline will continue to pursue acting and is planning on moving to New York City. Favorite past roles include Brooke Ashton (*Noises Off*), Betsy (*Crazy for You*), Annie Oakley (*Annie Get Your Gun*), and as a

resident actress/ choreographer last summer at the Palace Theatre for their Professional Children's Series. She cannot believe that the time has finally come to graduate, and will miss her Players family more than anything. Special thanks to my besties in 419, Vanessa (four incredible years of Playas love!), Morgan, and Mom and Dad.

LaShonda COOKS (ENSEMBLE)

LaShonda Cooks is a sensational senior at Babson College. She is ridiculously excited about performing in *The Wedding Singer*, her final musical at Babson.





Winfred **FIELDS** (**George**)

Winfred completely forgot to write his biography for Lauren to put into the program and left her to go wild with this entry. Winfred is an amazing friend and a great person, but next time he had better get his biography in! Lauren does forgive him this for now though. Winfred is also very happy to be participating in *The Wedding Singer* and hopes that you all enjoy the show!

Amanda Greenslet (**Rosie**)

Amanda Greenslet is so excited to be old again. Appearing in her first role ever as Ethel in *Moon Over Buffalo* and shortly thereafter as Martha Brewster in *Arsenic and Old Lace*, Amanda finds it quite refreshing to be an old lady once again. *The Wedding Singer* has been a wonderful experience for Amanda thus far, and now that it is show time, she is ready to get out there and "show you what [she's] made of!" Amanda would like to thank her family and friends for their love and support, and as Mr. Foley always said, "Have fun, and tell the story!" Past roles include Essie, *You Can't Take It With You*; Ensemble, *The Vagina Monologues 2009*; Julia, *Lend Me A Tenor*; Ruthie Taylor, *Bat Boy*; Hippolyta/Titania, *A Midsummer Night's Dream*; Bernice Roth, *The Musical Comedy Murders of 1940*; Natalie Evans, *The Pen and The Sword*; and Ensemble, *The Vagina Monologues 2010*.



Sarina **KOWAGUCHI** (**ENSEMBLE**)

Sarina was born and raised in Japan and is currently a freshman at Babson. She is **EXTREMELY** hyped to be performing in her first Babson Players performance, and is hoping she will not be dropped during one of the many times she is either carried or flipped on stage. Sarina loves to dance (although she has difficulty keeping to the beat), shopping at drug stores, watching the Disney channel, and eating the yogurt parfait from Jazzman's. She would like to thank POP, her friends, and family for their endless love and support – enjoy the show!

CHRISTY Lau**BACH (TIFFANY/ Sales Cl ERK)**

Christy has thoroughly enjoyed being in another show with the Babson Players. Gus Ba might say, Christy has had a “vivacious” experience. She likes being associated with high fives, Ice Climbers, and the Shin Kickers- the most awesome Frisbee team in existence. Thanks for all of the support, everyone!



TIFFANY Lie**N (Ensemble/1ST Suit)**

Tiffany is a senior at Babson College studying entrepreneurship and global business management. This is her third show with the Babson Players, and she can't WAIT to relive the 80's with you (well...maybe just live it. She was only 1.5 when the 80's ended!). In her free time, she loves traveling, playing sports, meeting new people, creating new experiences, and taking lots and lots of pictures (J). She is incredibly sad that this will be her last performance with the Players, but thank you to her family and friends for all their support (special shout out to Map Hill 317!)! Especially to the Babson Players – theater was something new she decided to try in college, and because of them, she has continued to want to be a part of such an awesome organization.



KERRY Liszka (Stage manager**R**)

So in her submission to Lauren, Kerry helpfully put three options down for her biography. Lauren chose to write all three. See below...



1. I have received some very important advice in my time as Stage Manager for *The Wedding Singer* and now I would like to pass it on to you: “Don't give away the Bum!”
2. This play is my jam on bread with a little bit of peanut butter except for kids who are allergic to nuts. For them I have Wheat Nuts - a nut-like snack food.
3. This show was brought to you by Babson College's Dunkin Donuts (Can I have a free coffee for saying that?)

JUAN TUMANI

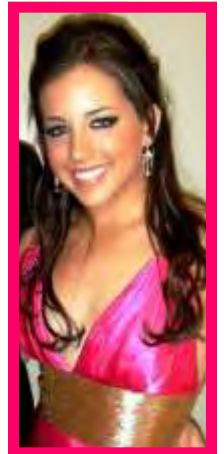
Do you detect a pattern in this choice of roles? Once again, the Players have turned to the oldest (and drunkest) actor they know and have given him another chance to act in a Players' production. Stereotyping? I think not.

TIFFANY OTTO (WAITRESS ENSEMBLE)

Tiffany is returning to theater after a long hiatus, it took a truly fabulous show to bring her out of the woodwork! She is from both California and Australia and spends her free time when not at rehearsal doing stuff related to her fraternity, Kappa Kappa Gamma. She also is highly involved in Babson Greek Life, serving on Panhellenic Council, Inter-Fraternal Council, and Greek Council. She is very excited to be doing her first work with the Babson Players, and wants to thank everyone who supported her along the way.

ANNIE MARASCHIELLO (JULIA SULLIVAN)

Annie is excited to be playing the role of Julia in *The Wedding Singer*. This is her third show with the Babson Players. Annie is from Woburn, MA and is a sophomore at Babson College. She has appeared in a countless number of musical performances throughout her lifetime, as well as various vocal and dance productions, most recently performing as Shelley in *Bat Boy* and Miss Adelaide in *Guys and Dolls*. Annie's other stage performances include roles in *Oliver*, *Cinderella*, *Grease*, *Hello Dolly*, *Peter Pan*, *The King and I*, and *Lil' Abner*. She was a finalist in the American Idol Experience in Walt Disney World and got the chance to perform in front of thousands of people from all over the world. She can be seen in a national commercial for Liberty Mutual and the box office hit "Paul Blart: Mall Cop". Special thanks go out to MoCo Music in Arlington, MA for the years of amazing voice lessons! Annie is delighted to be a member of the Babson Players and sends lots of love to her amazing family & friends, Sisters of Kappa Kappa Gamma, her boyfriend Ryan, and to her biggest fans- her fabulous Mum and Dad! Thank you all for your constant support xoxox





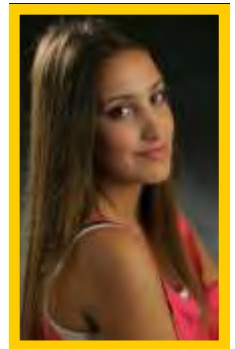
Tom **PANDOLFO** (**SAMMY**)

Tom Pandolfo is an Olin freshman, hailing from Long Island; his love for theater has triggered in him an insanity, a symptom of which is his participation in four shows in the last 6 months. When he isn't selling his soul to the stage, he enjoys watching LOTS of movies, programming in Python, and rocking out on the piano. This is his first show with the Players and, he assures you, it will not be his last – he looks forward to many more

shows in the years to come. He thanks his family and friends for coming, and hopes that his performance as the occasionally insensitive yet goofy and sympathetic character of Sammy will help to offset the unexpected and unfortunate “adulterer/adulteree/murderous psychopath” typecast he seems to have acquired during his time at Olin. Finally, he'd like to send out a big „thank you’ to his classmates at Hampton Bays High School for providing inspiration for his character.

Re**NATA** Ri**BEIRO** (Dance **CAPTAIN**)

Renata Ribeiro is a freshman at Babson College and she is excited to be participating in her first production with the Babson Players. She is thankful for the position as Dance Captain in this production of *The Wedding Singer* and hopes to participate in many more performances here. Past roles include Vivian Bearing in *Wit*, Antigone in *Antigone*, Tessie in *Annie* and many more. She would like to thank her friends and family for their support. "We do not live for reality but for the fantasies, the dreams of what might be"-Michael Shurtleff



Shawn Salerman (**BILLY |DOL**)

Raised in the outback of Australia, Shawn as a young bloke learnt the skill of acting. It was a necessity while living in the bush, as the kangaroo's that brought him food would only respond to charades. 20 years passed and Shawn, while going walk about, discovered the great city of Melbourne. This is where he spent four months of his

life getting an education and learning how to spell and read. Because Shawn excelled so much in spelling and charades, he decided to bring his skills to Babson. The story now continues...

Siddharth Saxena (ENSEMBLE)

Siddharth is a freshman this year at Babson College. He is very excited to be in *The Wedding Singer* as his first production with the Babson Players!! He enjoys being pretty freakin' cool, working out, surfing, skiing, and staying active. He is currently starting up and managing two companies here at Babson. He would like to thank the Players and his family for their support.



Kip Shelton (ENSEMBLE)

Kip is a sophomore at Babson College and is very excited for the show! He hopes that you have an excellent experience watching this production of *The Wedding Singer*.



Patricia Silhy (ENSEMBLE)

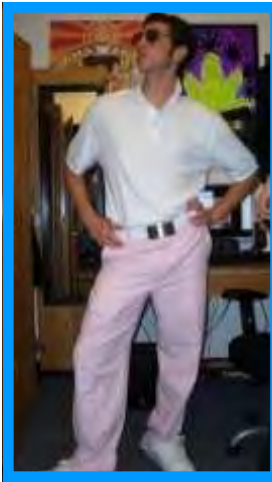
Patty is a Senior at Babson College, and is super sad that this is her last musical. (huge tears) She joined the Players her sophomore year and loves the organization and all the amazing people she has met. Thank you sooo much for coming over to support. Please, make sure you are loud and are having a BLAST during the show!



Benjamin Small (ROBBIE Hart)

Ben Small is a senior at Olin College studying math and computer science. This is his third and final time on stage with the Babson Players, previously appearing in *Beauty and the Beast* and last year's *Bat Boy*. *The Wedding Singer* marks the 20th show that Ben has been involved in while a student at Olin, and while each has been memorable, this one will hold a special place in his heart. Thank you to the Babson Players, to FWOP and Upstage, to Jim, and to you, because without you, there would be no show.





Morgan Smith (BeST MAN/1ST WEDDING)

Morgan Smith hails from San Diego, CA and has been acting out ever since. He is ridiculously excited to be in *The Wedding Singer* because it is so much fun and is visually fantastic. His activities of interest include but are not limited to: Skateboarding, Surfing, Rugby, Yoga, and just keeping it classy. What he lacks in his dancing and singing abilities, he makes up with his endless supply of energy. This will be his third and final musical with the magnificent Babson Players as he will be graduating in May. He is greatly appreciative of the love and support of his amazing friends, family, and leading lady.

TANYa SoMan (DONATELLa/Ensemble)

Tanya is a freshman at Babson College and is excited for the show! She hopes that you have just as much fun watching *The Wedding Singer* as she did participating in it!



Andrea Stadler (ENSEMBLE)

Andrea loves puzzles and is keeping to the tradition of just giving you a puzzle as apposed to telling you anything about herself. Enjoy!

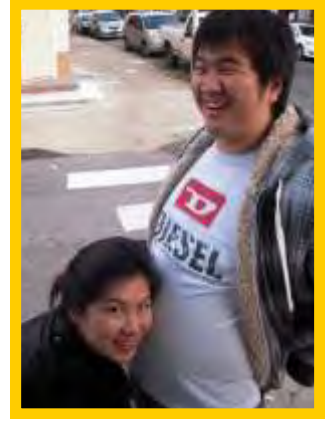


A train with a length of 100m takes 30 seconds to travel over a 400m bridge. Assuming that the train's speed is constant, how many kilometers per hour is it traveling at?

Feel free to come say hi to me and to check your answer after the show.

MICHAEL Sung (**THE Shy JOKER/ EnseMBLE**)

Michael was born in Indonesia, but raised in Singapore which makes him fluent in three languages: Bahasa Indonesia, English, and Mandarin. His hobbies consist of basketball, soccer, sleeping, eating, "studying", movies, and eating...A LOT! This is his first musical with the Babson Players and would like to thank the crew for their undying support of his clumsiness during rehearsals and of course thank everyone else who's watching this musical to see me get slapped :p



VANESSA **THEOHARIS** (Linda)

Vanessa Theoharis is proud and honored to be the president of an organization that continues to inspire not only herself but the entire community with each production. This is her 9th and final performance with the Babson Players – what better way to end her senior year than with this hit production! Huge hugs to her E-Board, the Production Teams throughout the year, and the Players Alumni for giving her the strength to rock this presidency – I owe you all. Love to Bra-cob, her crazy family, and the Sorenson stage. Ladies & Gents, get mesmerized by the lights and sounds of *The Wedding Singer*!



Sarah **WINNETT** (ENSEMBLE)

Sarah Winnett is not quite sure what year she is at Babson, concentrating in Literary and Visual Arts. She hails from Attleboro, a town full of possessed geese, dollar stores and not much else. Besides the musical, she enjoys films, reading, spouting random Shakespeare lines and talking with the voices in her head. She is so excited to be participating in her third show with the Babson Players and that she actually has lines! She'd like to thank her father for being the incredibly amazing person he is and for always supporting her.



Shoney Ya**KUBJANOV** (ENSEMBLE)

Shoney is currently a sophomore at Babson College and also did not respond to Lauren's many emails to send in his biography and picture. Shoney is very excited to be participating in this spring's show and hopes that you all enjoy the show! He also loves Lauren very, very much for writing this bio for him.



Diana **YAN** (ENSEMBLE)

Diana is currently a junior at Babson College and is excited for her performance in *The Wedding Singer*. She hopes you enjoy the show (just like everyone else who didn't send in a bio)!



Amy Zal**ATAN** (ENSEMBLE)

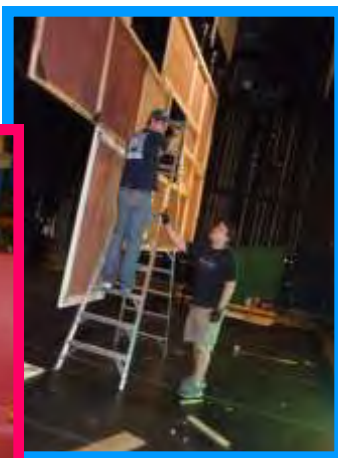
Amy is a sophomore at Babson College studying Entrepreneurship and Marketing. *The Wedding Singer* is Amy's first production with the Babson Players and she cannot wait to do more. Amy enjoys reading, hanging out with her amazing friends, watching TV, and sleeping. She loves all the crazy, wonderful, marvelous people she met through the musical to death. She would like to thank her parents and her sister for all the support, she loves you guys.

JIM Fagan (DIRECTOR)

Is thrilled to be returning to Babson to direct his third production with the Players, having directed *Bat Boy: The Musical* last year, and *A Midsummer Night's Dream* in the park last summer. Other local directing credits: *Neighborhood 3: Requisition of Doom*

(Appolinaire Theatre Company), *Where The Magic Happens*, (SpeakEasy Stage Company), *The New Century* (asst- SpeakEasy), *Missed Exit* (Boston Theater Marathon-SpeakEasy), *Assassins* (Curtain Call Theatre), *Unprofessional* (The Merry Pranksters) and *Art* (Boston College).

Next week, his latest project, *Fishnet-netoworks.net*, a new audience interactive "office" comedy show, will open in the Boston Theater District. Check out the website (same as the title) for more info. Finally, at the end of April, he will be Asst. Directing *The Great American Trailer Park Musical* (SpeakEasy Stage). Jim is the Artistic Associate at SpeakEasy Stage Company, Artistic Director of The Merry Pranksters, and teaches youth acting at Apollinaire Theater. He is a regular cast member of Improv Boston's Friday Night Face-Off and a proud Boston College Alum, 2007. This Fall, Jim will join the Actor's Studio Drama School at Pace University as a member of the 2013 MFA directing class. www.jimfagan.info Lots of love to Mom, Dad, family, and friends. For Carolyn :)



**Best of luck to all
The Babson Players!!**

**We look forward to
another great
performance from
this fine group of
talented students.**

Have fun!

**Charles, Valerie and
Ross Camiel**



Mike,

**Congratulations
on your acting
debut.**

Enjoy yourself.

**Love,
Mom, Dad, Becky,
and Tasha**

Congratulations Yaffe!



Diabetics!...

**Declare Your
Independence with**

FREDO/MED™
The one source for all your Diabetic Supplies

**Have Your Diabetic Supplies Delivered
to Your Door for Little or No Cost!**

Medicare and Private Insurance welcome (sorry, HMO's not accepted)

Call Now! Toll Free

888-722-7556

Save this coupon
to receive \$1.00 off
admission the
Babson Players
Fall 2010
production.

Kerry,
Good luck with "The
Wedding Singer".

Have fun!!
We love you!!

Mom, Dad, Joan-
ie, and Mike



Tom,

**You make us so proud
with every part you
play!**

Break a leg!

**Love,
Mommy, Daddy, Alex
and
Pippin, too!**



MORGAN

**YOUR STYLE, YOUR TALENT
YOUR HARD WORK, AND YOUR
CREATIVITY HAVE MADE YOU
A GREAT ASSET TO BABSON
AND THE BABSON PLAYERS.
NOW IT IS ON TO BRILLIANT
ACHIEVEMENTS IN CALIFORNIA.**

YOUR FRIENDS AT DREAMWORKS!

Congratulations to
Annie Maraschiello
“Julia”



And to the entire cast and crew of
The Wedding Singer

Break a Leg!

Another Opening, Another Show!
And we have loved them ALL!

All Our Love,
Mum and Dad

Renata:

Best of luck to you and all cast of The
Wedding Singer!

It's going to be the best performance
ever!

Kisses from Mom, Dad, Rafael and
Fabio.

We love you!

To Jake, Vanessa
and the
Babson Players,

*Congratulations
on another
Brilliant Success!*

The Bradys
Michelle, Gary, Korleen, Ben &
Anna



Congratulations to the Class of 2010!

Best Wishes to the Babson Players for
Continued Success!



Thank you for being a home-away-from-home to our
daughter.

Congratulations Players!

Love,
Garrett & Yaffe and this
Baby



Please **RECYCLE THIS PROGRAM**
WHEN YOU ARE FINISHED
PERUSING ITS CONTENTS





WINTHROP PLAYMAKERS

Babson Players –

Break a Leg on your production of *The Wedding Singer!*

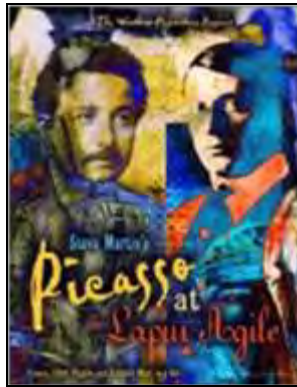
Come and join us for the rest of our season:

Anything Goes



April 16-18, 2010
April 23-25, 2010
April 30 - May 2, 2010

Picasso At The Lapin Agile



June 18-20, 2010
June 25-27, 2010

And our Summer Revue *Broadway A to Z* August, 2010

For information and tickets, please visit us at
www.winthropplaymakers.com

**CONGRATULATIONS TO ALL OF OUR
GRADUATING Senior PLAYERS!**

Good Luck!!
We love you and will miss you!

Stephanie **AYOTTE**
Jac**QUELINE** Chambers
LaShonda **COOKS**
La**UREN** DeSoiza
Dan**IEL** Fl **AHERTY**
RJ Keen**EY**
La**UREN** Kritzer
Tiffan**Y** Lien
Jessica **McDoNOUGH**
C**ATALINA** Or**TIZ**
Lily Sa**FFER**
Patr**ICIA** Sil **HY**
Ben**JAMIN** Small
Morgan **Smith**
VANESSA The**OHARIS**
Meredith **WHATLEY**
Julie Willia**MS**
Sa**RAH** WINNETT

We expect to see you in the
balcony many a time!